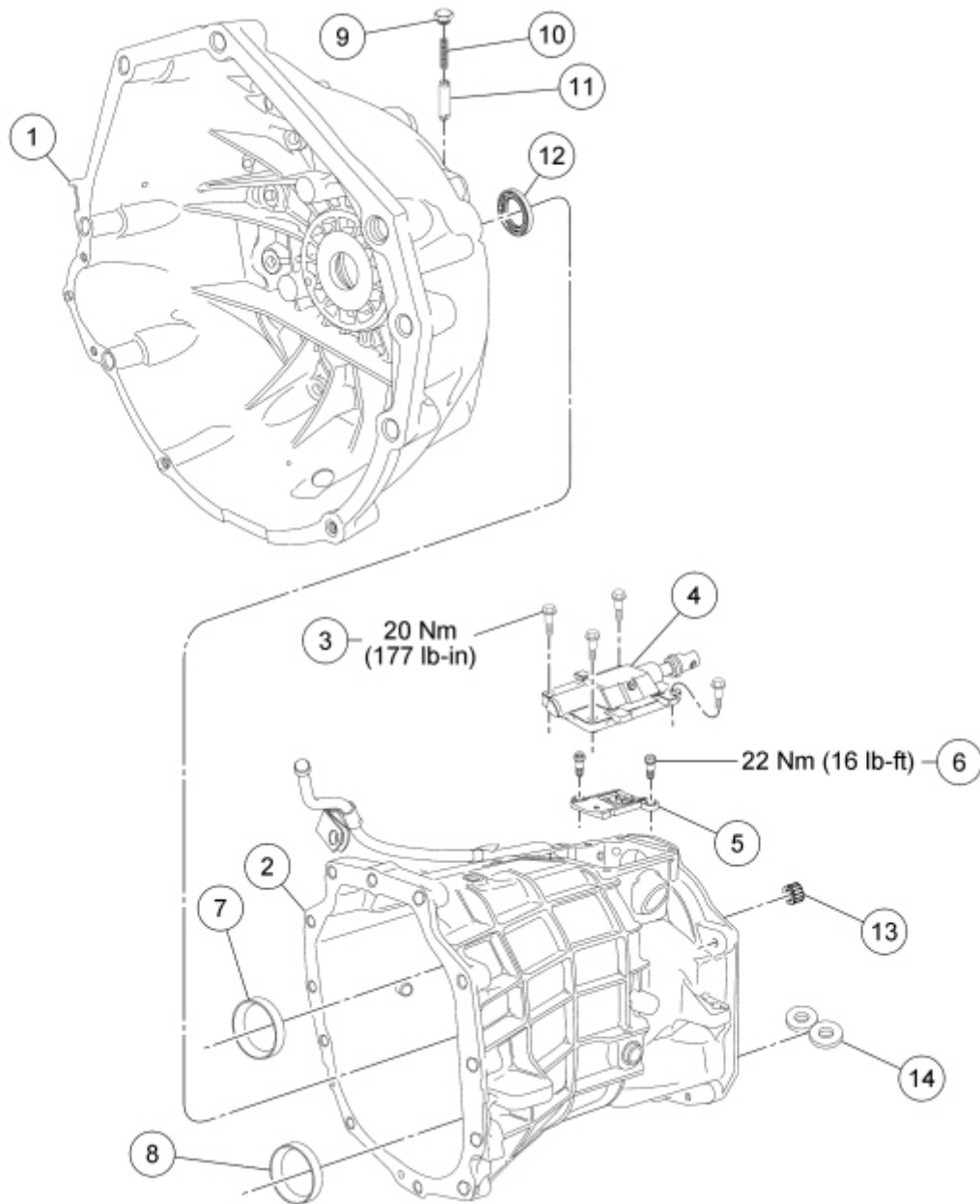


Transmission Case

Special Tool(s)

 <p>ST2336-A</p>	Handle 205-D055 (D81L-4000-A)
 <p>ST1555-A</p>	Installer, Bearing Cup 204-039 (T77F-1217-B)
 <p>ST1555-A</p>	Installer, Bearing Cup 204-080 (T83P-1104-AH1)
	Installer, Rear Axle Oil Seal 205-155 (T80T-4000-Y)

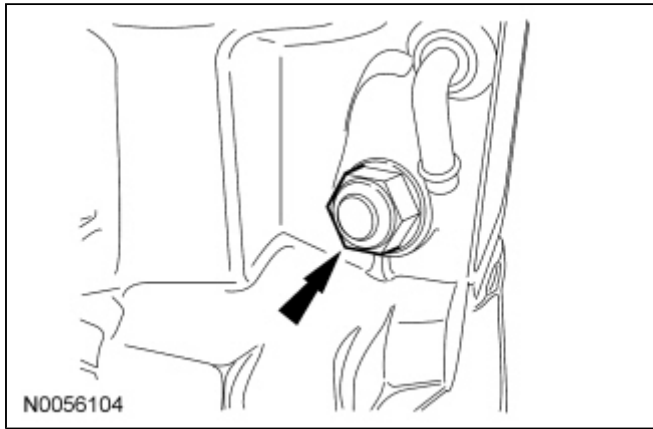


N0101256

Item	Part Number	Description
1	6392	Clutch housing
2	7005	Transmission main case
3	—	Shift detent cover bolt (4 required)
4	7C453	Shift detent cover assembly
5	7F476	Shift guide plate
6	—	Shift guide plate bolt (2 required)
7	—	Output shaft bearing cup
8	—	Countershaft bearing cup
9	—	Shift detent plug
10	7234	Shift detent spring
11	—	Shift detent
12	7052	Input shaft seal
13	7127	Top shift rail bearing
14	7L027	Magnet

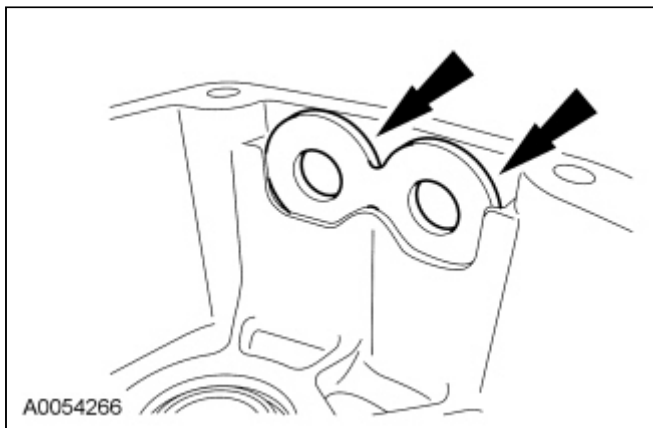
Disassembly and Assembly

1. Remove the shift detent cover assembly from the transmission main case.
 - To install, tighten to 20 Nm (177 lb-in).
2. Remove the shift detent plug and the spring and shift detent from the clutch housing.

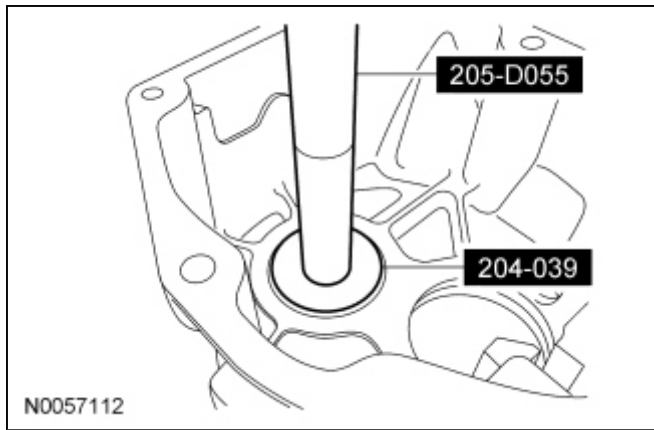


3. Remove the 2 shift guide plate bolts and the shift guide plate.
 - Inspect the shift guide plate for wear or damage. Install a new shift guide plate as necessary.
 - To install, tighten to 22 Nm (16 lb-ft).
4. **NOTE:** Do not remove the magnets.

Clean the case magnets.

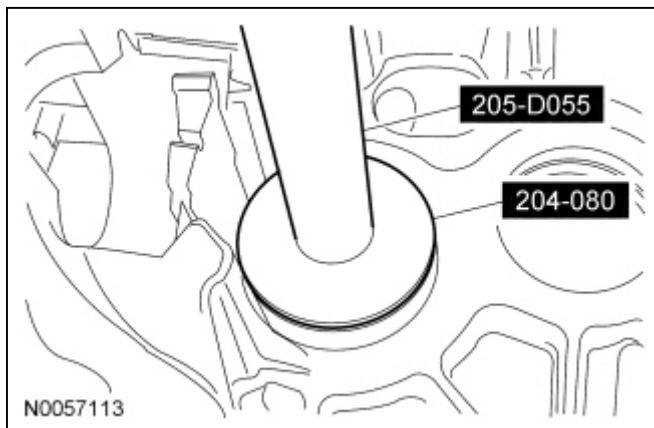


5. Remove the reverse lamp switch.
 - To install, tighten to 27 Nm (20 lb-ft).
6. Inspect the countershaft and mainshaft bearing cups for wear or damage. Install new components as necessary.
7. Using the Bearing Cup Installer with Handle, remove the countershaft bearing cup.



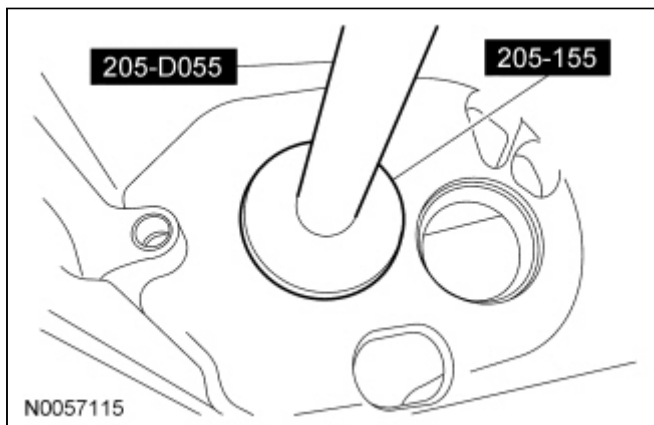
8. Using a suitable tool, remove mainshaft bearing cup.
9. Clean the case with solvent and dry with compressed air. Clean and check the sealing surface for nicks or scratches. Inspect the case for cracks.
 - If the case is cracked, install a new case. If the sealing surface has nicks or scratches, use a soft stone or crocus cloth to remove.
10. **NOTE:** If a new countershaft bearing is being installed, install a new bearing cup. Always install new bearings and cups in a set.

Using the Bearing Cup Installer with Handle, install the countershaft bearing cup.



11. **NOTE:** If a new mainshaft bearing is being installed, install a new bearing cup. Always install new bearings and cups in a set.

Using the Rear Axle Oil Seal Installer with Handle, install the mainshaft bearing cup.



12. To assemble, reverse the disassembly procedure.

